



**scale
systems**

A United Dominion Company

PRO-WEIGH® 84 FLP

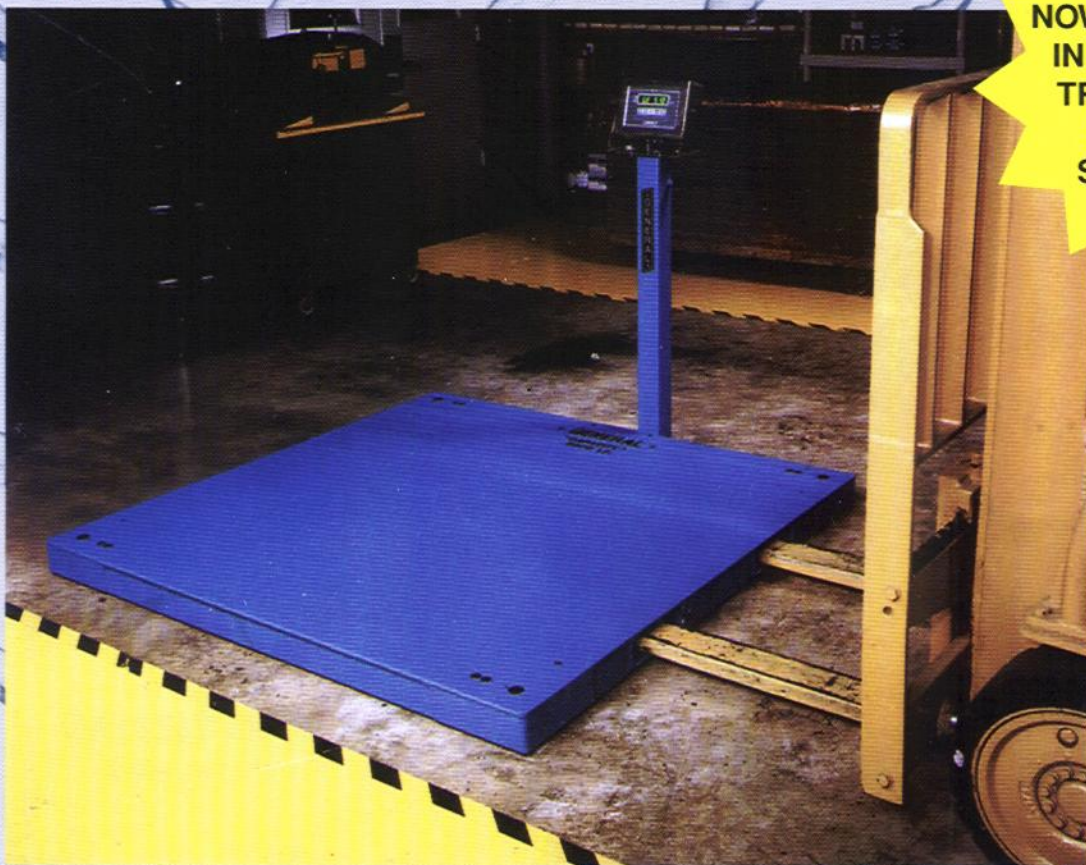
PORTABLE FLOOR SCALE FOR USE WITH FORKLIFTS

FOR EASY AND SAFE PORTABILITY, THE TIME PROVEN PRO-WEIGH 84 FLOOR SCALE IS EQUIPPED WITH FORKLIFT POCKETS IN THIS SPECIAL MODEL.

- Heavy duty construction with 3/8" deckplate
- Carbon or stainless steel
- 100% end and side loading
- Top access corner levelling
- Stainless steel ball bearing levelling feet
- Hermetically sealed stainless steel load cells



WEIGH THE POSSIBILITIES



**NOW AVAILABLE
IN SMOOTH &
TREADPLATE
LOADING
SURFACES**

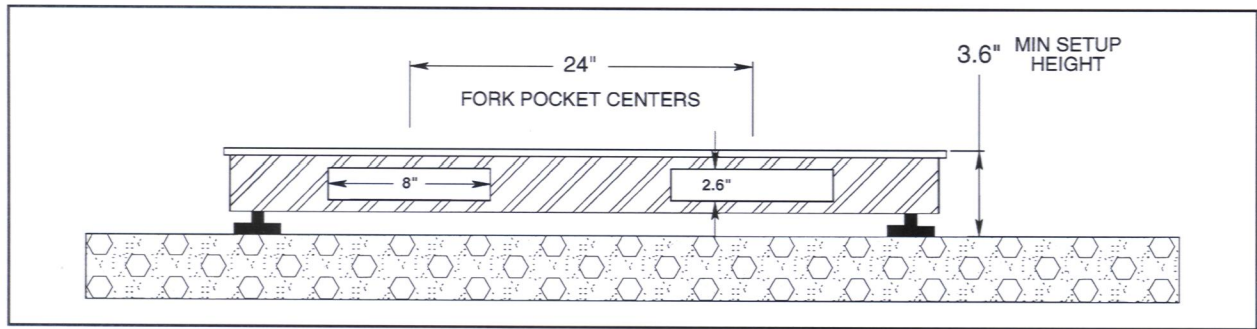
QUALITY

DEPENDABILITY

VALUE

PRO-WEIGH 84 FLP - FORKLIFT POCKET SCALE

Forklift pockets form integral part of scale support structure



Formed of heavy gauge steel, the forklift pockets run the length of the scale. Forklift pockets are designed on 24" centers and have an ID of 8" x 2.6".

• SIZES and CAPACITIES

4' x 4' 4' x 5' 4' x 6'
5' x 5' 5' x 6' 5' x 7'
1,000 to 10,000 lb

• 3 3/8" LOW PROFILE DESIGN

Minimum setup height is 3 5/8".

• QUICK SETUP

Each scale is completely assembled, tested and factory calibrated to a weight indicator, ready for use. Just place the scale on the floor and start weighing.

Top access corner leveling, 20 ft. load cell cable and convenient top access to trim/junction box are standard.

• WEATHERPROOF, IMPACT PROTECTED LOAD CELLS

Employs four (4) NEMA 6P/IP68 hermetically sealed stainless steel precision shear beam load cells, NTEP certified and FACTORY MUTUAL SYSTEMS (FM) approved. Rated load cell capacity is 200% of scale capacity.

• OPTIONS and ACCESSORIES

- Treadplate
- Drive-on ramps
- Anchor plates
- Bump ramps
- Custom sizes
- Indicator column
- Indicator

• SPECIFICATIONS

Construction material:

A36 carbon steel or Type 304 stainless steel

Surface finish:

S-W Polane-T polyurethane or sandblast stainless steel

Leveling load feet:

Stainless steel 3" diameter ball bearing

Load cells:

4 NEMA 6/IP68 hermetically sealed stainless shear beam

Bridge resistance:

350 ohm

NEMA 4X trim/summing box

H44 operating range:

14°F to 104°F

• APPROVALS

NTEP C.o.C. # 88-288A1

• 2 YEAR LIMITED WARRANTY

Your local distributor is:



A United Dominion Company

22705 Heslip Drive
Novi, MI 48375 USA
Phone: 248-380-8700
Fax: 248-380-5029
Toll Free: 800-755-7875 (MI)

In Canada: 403-948-9921
In Europe: (49) 2173916399-0

Website: www.gse-inc.com
Email: gse-sales@gse-inc.com

Mechanical Systems Division
914 SE 14th Place
Cape Coral, FL 33990 USA
Phone: 941-574-2313
Fax: 941-574-2296
Toll Free: 800-237-6284 (FL)

